

2 Port PCI Express Gigabit POE Network Adapter

ST2000PEXPSE



*actual product may vary from photos

DE: Bedienungsanleitung - de.startech.com

FR: Guide de l'utilisateur - fr.startech.com

ES: Guía del usuario - es.startech.com

IT: Guida per l'uso - it.startech.com

NL: Gebruiksaanwijzing - nl.startech.com

PT: Guia do usuário - pt.startech.com

For the most up-to-date information, please visit: www.startech.com

FCC Compliance Statement

This equipment has been tested and found to comply with the limits for a Class B digital device, pursuant to part 15 of the FCC Rules. These limits are designed to provide reasonable protection against harmful interference in a residential installation. This equipment generates, uses and can radiate radio frequency energy and, if not installed and used in accordance with the instructions, may cause harmful interference to radio communications. However, there is no guarantee that interference will not occur in a particular installation. If this equipment does cause harmful interference to radio or television reception, which can be determined by turning the equipment off and on, the user is encouraged to try to correct the interference by one or more of the following measures:

- Reorient or relocate the receiving antenna.
- Increase the separation between the equipment and receiver.
- Connect the equipment into an outlet on a circuit different from that to which the receiver is connected.
- Consult the dealer or an experienced radio/TV technician for help.

Use of Trademarks, Registered Trademarks, and other Protected Names and Symbols

This manual may make reference to trademarks, registered trademarks, and other protected names and/or symbols of third-party companies not related in any way to StarTech.com. Where they occur these references are for illustrative purposes only and do not represent an endorsement of a product or service by StarTech.com, or an endorsement of the product(s) to which this manual applies by the third-party company in question. Regardless of any direct acknowledgement elsewhere in the body of this document, StarTech.com hereby acknowledges that all trademarks, registered trademarks, service marks, and other protected names and/or symbols contained in this manual and related documents are the property of their respective holders.

Table of Contents

Introduction	1
Packaging Contents	1
System Requirements.....	1
Installation	3
Hardware Installation	3
Driver Installation.....	4
Verify Installation.....	4
Specifications	5
Technical Support	6
Warranty Information	6

Introduction

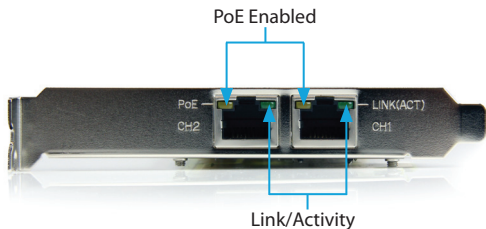
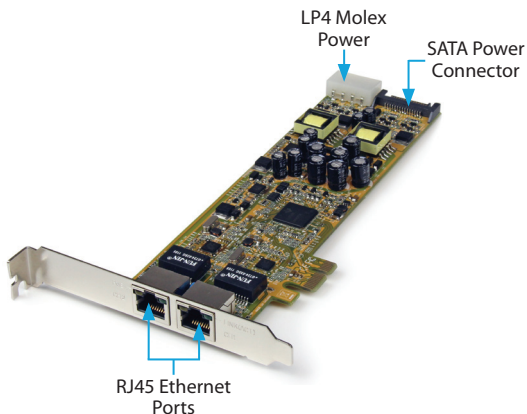
The ST2000PEXPSE Dual Port PCI Express Gigabit Ethernet Network Card with Power over Ethernet (PoE) provides two 10/100/1000 Mbps RJ45 Ethernet ports that can also provide up to 25.5W of power each. Combining data and power on a single cable for less clutter and convenient installations in remote locations. This full/low profile Gigabit server adapter supports the IEEE 802.3at (Type 1 and 2) standard for a Power Sourcing Equipment (PSE) device that can provide 48V DC power to a compliant Powered Device (PD). This eliminates the need for a separate power source and cable for remote networked devices such as IP cameras, IP phones and wireless access points. Suitable for any PCI Express-enabled client, server or workstation, the network adapter supports features such as Jumbo Frames, VLAN tagging and Wake on LAN (WOL). This PCIe NIC is backed by a StarTech.com 2-year warranty and free lifetime technical support.

Packaging Contents

- 1x PCI Express Network Card
- 1x Low Profile Bracket
- 1x Driver CD
- 1x Instruction Manual

System Requirements

- PCI Express enabled computer system with available PCI Express slot
- Available SATA power or LP4 Molex connector from the computer power supply
- Microsoft® Windows® XP/ Server 2003/ Server 2008 R2/ Vista/ 7/ 8 (32/64-bit), Linux kernel 2.4.x and later



LED	Color	Status
Link/Activity	Green	Solid On: Link detected Flashing: Data transmission Off: No link detected
PoE Enabled	Yellow	Solid On: PoE enabled (Powered Device detected) Off: PoE disabled (Powered Device not detected)

Installation

WARNING! PCI Express cards, like all computer equipment, can be severely damaged by static electricity. Be sure that you are properly grounded before opening your computer case or touching your PCI Express card. StarTech.com recommends that you wear an anti-static strap when installing any computer component. If an anti-static strap is unavailable, discharge yourself of any static electricity build-up by touching a large grounded metal surface (such as the computer case) for several seconds. Also be careful to handle the PCI Express card by its edges and not the gold connectors.

Hardware Installation

1. Turn your computer off and any peripherals connected to the computer (i.e. Printers, external hard drives, etc.). Unplug the power cable from the rear of the power supply on the back of the computer and disconnect all peripheral devices.
2. Remove the cover from the computer case. See documentation for your computer system for details.
3. Locate an open PCI Express slot and remove the metal cover plate on the rear of the computer case (Refer to documentation for your computer system for details.). Note that this card will work in PCI Express slots of additional lanes (i.e. x4, x8 or x16 slots).
4. Connect either an LP4 Molex or SATA Power connector from the computer power supply to the appropriate connector on the card.
5. Gently insert the card into the open PCI Express slot and fasten the bracket to the rear of the case.

NOTE: If installing the card into a small form factor/low profile system, replacing the pre-installed full profile bracket with the included low profile installation bracket may be necessary.

6. Place the cover back onto the computer case.
7. Insert the power cable into the socket on the power supply and reconnect all other connectors removed in Step 1.

Driver Installation

Windows

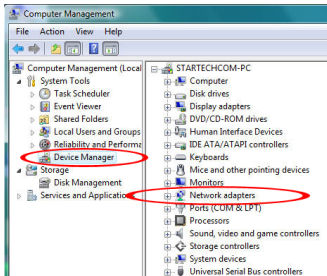
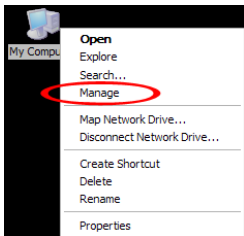
1. Upon starting Windows, if the “Found New Hardware” wizard appears on the screen, cancel/close the window and insert the included Driver CD into the computer’s CD/DVD drive.
2. AutoPlay should give you the option to browse the files on the CD or automatically open the CD. If AutoPlay does not start, Go into “My Computer” and access the CD/DVD drive that the CD is in (e.g. D:).
3. Navigate to the location “LAN/Realtek/RTL8111B_8111C_8111E” and then access the folder for the appropriate operating system version.
4. Double-click the file “Setup.exe” to start the driver installation program.
5. Complete the wizard and this will automatically install all of the drivers/software. Restart the computer if prompted.

Verify Installation

Windows

From the main desktop, right-click on “My Computer” (“Computer” in Vista/7), then select “Manage”. In the new Computer Management window, select “Device Manager” from the left window pane.

In the Device Manager, under the “Network Adapters” category, you should see two new Realtek PCIe GBE devices listed.



Specifications

Host Interface	PCI Express 1.1 (x1 slot connector)
Form Factor	Full/Low Profile
Chipset ID	Realtek RTL8111E
External Connectors	2x RJ45 Ethernet Female
Internal Connectors	1x LP4 Molex Male 1x SATA Power Male
LEDs	2x PoE enabled 2x Link/Activity
Supported Standards	IEEE 802.3, IEEE 802.3u, IEEE 802.3ab, IEEE 802.3at
Compatible Networks	10/100/1000 Mbps
Power over Ethernet Output	25.5W
Auto MDIX Support	Yes
Full Duplex Support	Yes
Operating Temperature	0°C ~ 55°C (32°F ~ 131°F)
Storage Temperature	-20°C ~ 85°C (-4°F ~ 185°F)
Humidity	5% ~ 95% RH
Dimensions	195.0mm x 68.0mm x 19.0mm
Weight	150g
Compatible Operating Systems	Windows XP/ Server 2003/ Server 2008 R2/ Vista/ 7/ 8 (32/64-bit), Linux kernel 2.4.x and later

Technical Support

StarTech.com's lifetime technical support is an integral part of our commitment to provide industry-leading solutions. If you ever need help with your product, visit www.startech.com/support and access our comprehensive selection of online tools, documentation, and downloads.

For the latest drivers/software, please visit www.startech.com/downloads

Warranty Information

This product is backed by a two year warranty.

In addition, StarTech.com warrants its products against defects in materials and workmanship for the periods noted, following the initial date of purchase. During this period, the products may be returned for repair, or replacement with equivalent products at our discretion. The warranty covers parts and labor costs only. StarTech.com does not warrant its products from defects or damages arising from misuse, abuse, alteration, or normal wear and tear.

Limitation of Liability

In no event shall the liability of StarTech.com Ltd. and StarTech.com USA LLP (or their officers, directors, employees or agents) for any damages (whether direct or indirect, special, punitive, incidental, consequential, or otherwise), loss of profits, loss of business, or any pecuniary loss, arising out of or related to the use of the product exceed the actual price paid for the product. Some states do not allow the exclusion or limitation of incidental or consequential damages. If such laws apply, the limitations or exclusions contained in this statement may not apply to you.

Hard-to-find made easy. At StarTech.com, that isn't a slogan. It's a promise.

StarTech.com is your one-stop source for every connectivity part you need. From the latest technology to legacy products — and all the parts that bridge the old and new — we can help you find the parts that connect your solutions.

We make it easy to locate the parts, and we quickly deliver them wherever they need to go. Just talk to one of our tech advisors or visit our website. You'll be connected to the products you need in no time.

Visit www.startech.com for complete information on all StarTech.com products and to access exclusive resources and time-saving tools.

StarTech.com is an ISO 9001 Registered manufacturer of connectivity and technology parts. StarTech.com was founded in 1985 and has operations in the United States, Canada, the United Kingdom and Taiwan servicing a worldwide market.