

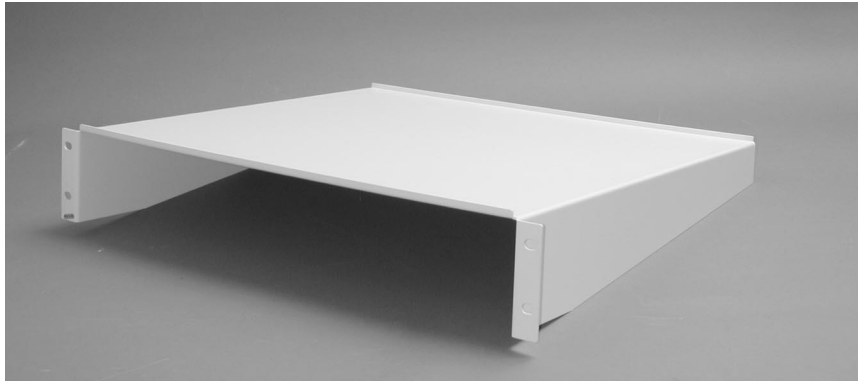
Cabinet Accessories

Installation Guide

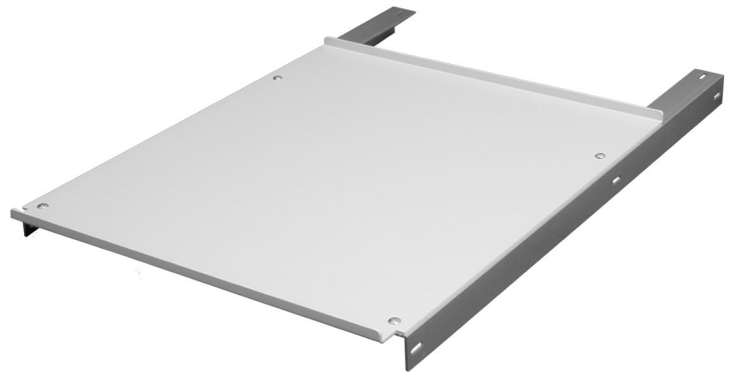


Cabinet Shelf

Short Shelf - There is no assembly required to the shelf itself. To mount the shelf into the cabinet decide where on the posts you would like the shelf to go. Screw the shelf into place.



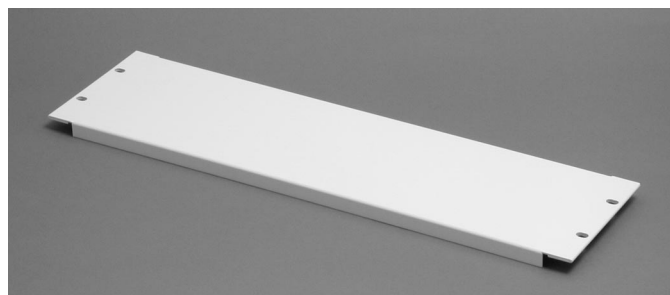
Deep Shelf - Before installing the deep shelf into the cabinet you must first join the mounting bracket to the shelf using the screws and nuts provided. Move the nuts in the cabinet to the desired height and fasten the shelf's brackets to the front and rear posts.



Cabinet Spacer Panels

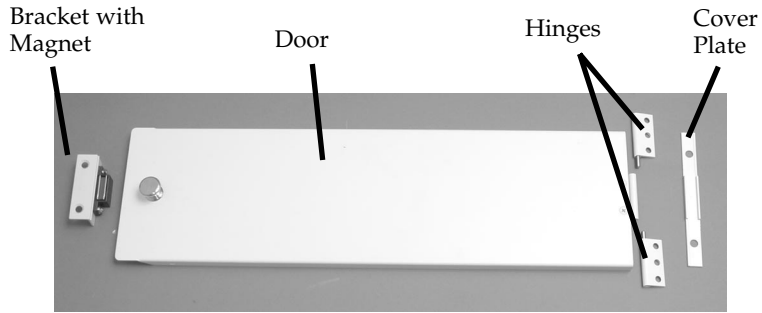
Blank Panel

There is no assembly required to the panel itself. To mount the panel into the cabinet decide where on the posts you would like the panel to go. Screw the panel into place.

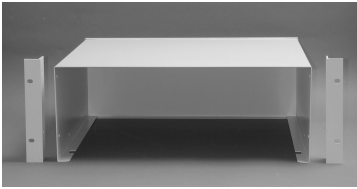


Hinged Panel

To assemble the hinged panel you must first put the hinges into the holes on the door. Mount the door onto the cabinet rails using the screws provided. Secure the cover plate to the cabinet rail covering up the hinges using the screws provided. Line up the bracket containing the magnet so the when you close the door it attaches to the magnet.



Cabinet Drawer



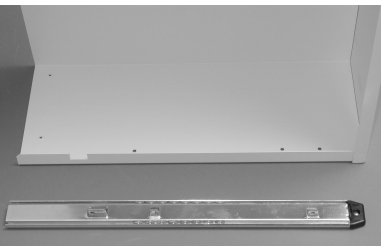
Attach the mounting brackets to the side of the outer casing of the drawer using the screws and nuts provided.



Attach the magnetic bracket to the inside of the outer casing of the drawer using the screws provided. The magnetic side of the bracket should face inward so that when the drawer is closed the back of the drawer sticks to the magnet.



Open the sliding rail fully. Match the holes of the rail with the holes of the inside drawer. Using the screws and nuts provided attach the rail to the inside drawer. Repeat these steps for the rail on the other side.



With the slide rail fully extended line the holes of the sliding rail with the holes on the outer casing of the drawer. Using the screws and nuts provided attach the rail to the outer casing. Repeat these steps for the rail on the other side.



Line the holes in the mounting brackets with those on the cabinet posts. Using the screws provided mount the drawer to the cabinet posts.

If you have any questions or concerns regarding the cabinets and accessories contact StarTech.com at 1-800-265-1844.