

USB 3.0 SATA or IDE HDD/SSD Dock w/ UASP

UNIDOCKU33



*actual product may vary from photos

DE: Bedienungsanleitung - de.startech.com

FR: Guide de l'utilisateur - fr.startech.com

ES: Guía del usuario - es.startech.com

IT: Guida per l'uso - it.startech.com

NL: Gebruiksaanwijzing - nl.startech.com

PT: Guia do usuário - pt.startech.com

For the most up-to-date information, please visit: www.startech.com

FCC Compliance Statement

This equipment has been tested and found to comply with the limits for a Class B digital device, pursuant to part 15 of the FCC Rules. These limits are designed to provide reasonable protection against harmful interference in a residential installation. This equipment generates, uses and can radiate radio frequency energy and, if not installed and used in accordance with the instructions, may cause harmful interference to radio communications. However, there is no guarantee that interference will not occur in a particular installation. If this equipment does cause harmful interference to radio or television reception, which can be determined by turning the equipment off and on, the user is encouraged to try to correct the interference by one or more of the following measures:

- Reorient or relocate the receiving antenna.
- Increase the separation between the equipment and receiver.
- Connect the equipment into an outlet on a circuit different from that to which the receiver is connected.
- Consult the dealer or an experienced radio/TV technician for help

This device complies with part 15 of the FCC Rules. Operation is subject to the following two conditions: (1) This device may not cause harmful interference, and (2) this device must accept any interference received, including interference that may cause undesired operation.

Changes or modifications not expressly approved by StarTech.com could void the user's authority to operate the equipment.

Industry Canada Statement

This Class B digital apparatus complies with Canadian ICES-003.

Cet appareil numérique de la classe [B] est conforme à la norme NMB-003 du Canada.

CAN ICES-3 (B)/NMB-3(B)

Use of Trademarks, Registered Trademarks, and other Protected Names and Symbols

This manual may make reference to trademarks, registered trademarks, and other protected names and/or symbols of third-party companies not related in any way to StarTech.com. Where they occur these references are for illustrative purposes only and do not represent an endorsement of a product or service by StarTech.com, or an endorsement of the product(s) to which this manual applies by the third-party company in question. Regardless of any direct acknowledgement elsewhere in the body of this document, StarTech.com hereby acknowledges that all trademarks, registered trademarks, service marks, and other protected names and/or symbols contained in this manual and related documents are the property of their respective holders.

Table of Contents

Introduction	1
Packaging Contents	1
System Requirements.....	1
Product Diagram	2
Front View	2
Rear View	2
Docking Station Installation	3
SATA Drive Installation	3
IDE Drive Installation	4
SATA/IDE Drive Removal	4
Docking Station Operation	5
Drive Initialization	5
LED Indicators	6
Disconnecting the Hard Drive	6
Specifications	8
Technical Support	9
Warranty Information	9

Introduction

Packaging Contents

- 1x Universal Hard Drive Dock
- 1x USB 3.0 Cable
- 1x IDE 40 to 40 Pin Cable
- 1x LP4 Power Cable
- 1x 40 Pin + LP4 to 44 Pin IDE Cable
- 1x Universal Power Adapter (NA/UK/EU/AUS)
- 1x Instruction Manual

System Requirements

- Computer system with available USB port
- 2.5" / 3.5" SATA and/or IDE Hard Drive (HDD) or Solid State Drive (SSD)

Product Diagram

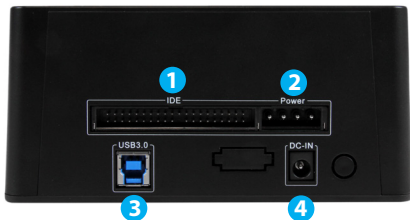
Front View

1. SATA Hard Drive Power button / Power and Activity LED (Button #1)
2. IDE Hard Drive Power button / Power and Activity LED (Button #2)
3. SATA Hard Drive slot (Slot #1)
4. IDE Hard Drive slot (Slot #2)
5. SATA Hard Drive eject button



Rear View

1. IDE Hard Drive Data Port
2. IDE Hard Drive Power port
3. USB 3.0 port
4. Power adapter port



Docking Station Installation

WARNING:

Hard drives and docking stations require careful handling. If you are not careful with your hard disk, lost data may result. Always handle your hard drive and docking station with caution. Be sure that you are properly grounded by wearing an anti-static strap when handling computer components or discharge yourself of any static electricity build-up by touching a large grounded metal surface (such as the computer case) for several seconds.

1. Connect the Dock to an available power outlet, using the provided power adapter.
2. Connect the Dock to your computer system, using the provided USB 3.0 cable.

SATA Drive Installation

1. Carefully align and insert your 2.5" or 3.5" SATA drive in the SATA Hard Drive slot (slot #1) on the docking station, such that the SATA power and data connectors on the drive are properly aligned with the corresponding connectors inside the hard drive slot.
2. Press the SATA Hard Drive power button.

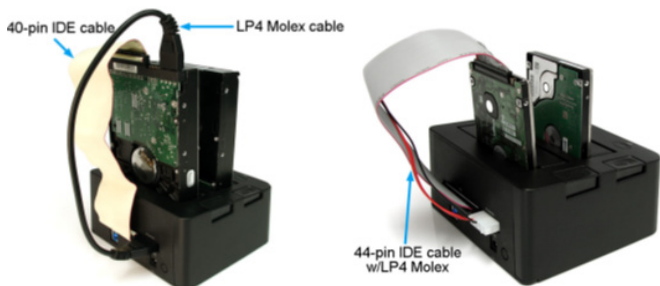


3. Your computer Operating System will now automatically recognize the drive and it will be accessible as though it were installed in the system internally.

Note: If your computer fails to automatically recognize your drive it is likely your drive has not been initialized or formatted correctly. (See Drive Initialization in Software operation for further instructions.)

IDE Drive Installation

1. Connect the included 40-pin IDE ribbon cable to the IDE connector on the rear of the dock. If using a 2.5in IDE hard drive, connect the 40 to 44-pin IDE cable to the rear of the dock.
2. Connect the included LP4 Molex power cable into the LP4 connector on the rear of the dock. If using the 40 to 44-pin cable, connect the built-in LP4 connector to the connector on the rear of the dock.
3. Connect the IDE hard drive to the ribbon cable and LP4 Molex connector (3.5in only). Make sure all of the cables are securely connected.
4. Insert the IDE hard drive into the top-loading drive bay (closest to rear connectors).
5. Press the IDE Hard Drive power button.



Note: If your computer fails to automatically recognize your drive it is likely your drive has not been initialized or formatted correctly. (See Drive Initialization in Software operation for further instructions.)

SATA/IDE Drive Removal

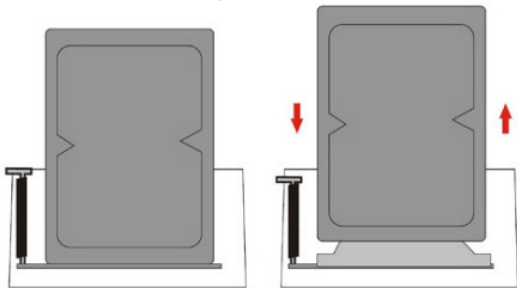
WARNING:

Ensure your hard drive(s) has been disconnected from your computer operating system prior to attempting drive removal. Failure to properly disconnect your drive may result in lost data or drive damage. (See Disconnecting the Hard Drive in Docking Station Operation for further instructions.)

1. Turn off your drive by pressing the corresponding power button.
2. (Only required for IDE drives) If you have a 3.5in IDE drive, disconnect the 40pin IDE cable and the LP4 power cable (3.5in drive) from both your hard drive and the docking station.

If you have a 2.5in IDE drive, disconnect the 44-pin IDE cable from the drive, and disconnect the 40 pin IDE cable and LP4 breakout cable from the docking station.

3. (Only required for SATA drives) Press the eject button for the SATA Hard drive to release the drive from the connector for removal.
4. Carefully grasp the drive and lift it upwards until the bottom of the drive has completely risen above the hard drive slot.
5. Safely and carefully store your drive and any cables in a secure location. (See your hard drive manual for proper storage instructions.)

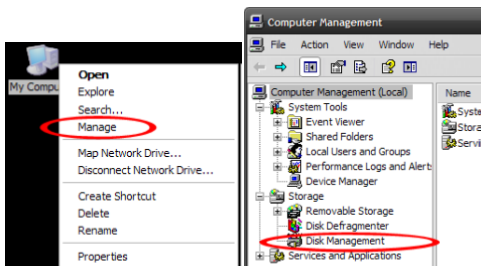


Docking Station Operation

Drive Initialization

Prior to using your installed drive, it will need to be initialized and formatted to the operating system requirements in order for your computer system to recognize it.

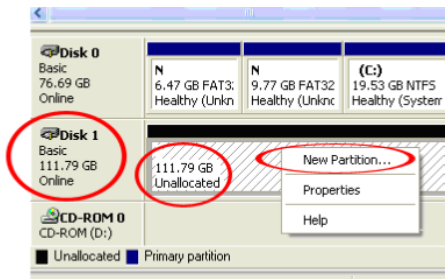
1. From the main Windows desktop, right-click on "My Computer" ("Computer" in Vista / 7 / 8 / 8.1), then select Manage. In the new Computer Management window, select Disk Management from the left window panel.



2. A dialog window will automatically appear, asking you to initialize the drive. Depending on the version of Windows, it will give you the option of either creating an “MBR” or “GPT” disk.

Note: GPT (GUID partition) is required for drives larger than 2TB but is not compatible with some older operating systems, while MBR is supported by newer and older operating systems.

3. Once initialized, locate the Disk that says it is “Unallocated” (check the listed hard drive capacity to confirm it’s the correct hard drive) and then right-click in the section that says “Unallocated” and select “New Partition”.



4. Follow the on screen prompts to initialize the drive in the format of your choice.

LED Indicators

The docking station offers a power LED indicator (blue) and an activity LED indicator (red) for each drive. When the drive is powered on, the Blue LED Power indicator will illuminate. While the hard drive is being accessed, the Red LED will flash. Do not remove your drive from the docking station while the Red LED is flashing, as it could damage to your drive, resulting in data loss.

Disconnecting the Hard Drive

Windows

1. Select the “Safely remove Hardware and Eject Media” icon, located in the task bar.
2. Select the storage device from the list that appears.
3. Wait for the message indicating that it is now safe to remove the device.

Note: Removing the connected drive prior to receiving notification that it is safe to do so, could result in losing or corrupting data stored on the drive. Once the Safe to Remove Hardware message appears, please remove the drive from the docking station. (See Drive Removal.)

Mac OS X

To safely disconnect the attached drive from the host computer, close any windows listing the contents of the removable drive. Once all windows are closed, click on the USB storage icon on the desktop, and drag it to the Trash Can icon on the desktop. Allow 5 seconds before physically removing the drive from the docking station.

Specifications

Host Interface	USB 3.0
Host Connectors	1 x USB 3.0 B female
Drive Connectors	1 x SATA DATA (7 pin) + Power (15 pin) reciprocal 1x IDE Data (40 pin) + LP4 Power (44 Pin adapter included)
Maximum Data Transfer Rate	USB 3.0: 5 Gbit/s
Compatible Operating Systems	O/S independent

Technical Support

StarTech.com's lifetime technical support is an integral part of our commitment to provide industry-leading solutions. If you ever need help with your product, visit www.startech.com/support and access our comprehensive selection of online tools, documentation, and downloads.

For the latest drivers/software, please visit www.startech.com/downloads

Warranty Information

This product is backed by a two year warranty.

In addition, StarTech.com warrants its products against defects in materials and workmanship for the periods noted, following the initial date of purchase. During this period, the products may be returned for repair, or replacement with equivalent products at our discretion. The warranty covers parts and labor costs only. StarTech.com does not warrant its products from defects or damages arising from misuse, abuse, alteration, or normal wear and tear.

Limitation of Liability

In no event shall the liability of StarTech.com Ltd. and StarTech.com USA LLP (or their officers, directors, employees or agents) for any damages (whether direct or indirect, special, punitive, incidental, consequential, or otherwise), loss of profits, loss of business, or any pecuniary loss, arising out of or related to the use of the product exceed the actual price paid for the product. Some states do not allow the exclusion or limitation of incidental or consequential damages. If such laws apply, the limitations or exclusions contained in this statement may not apply to you.

Hard-to-find made easy. At StarTech.com, that isn't a slogan. It's a promise.

StarTech.com is your one-stop source for every connectivity part you need. From the latest technology to legacy products — and all the parts that bridge the old and new — we can help you find the parts that connect your solutions.

We make it easy to locate the parts, and we quickly deliver them wherever they need to go. Just talk to one of our tech advisors or visit our website. You'll be connected to the products you need in no time.

Visit www.startech.com for complete information on all StarTech.com products and to access exclusive resources and time-saving tools.

StarTech.com is an ISO 9001 Registered manufacturer of connectivity and technology parts. StarTech.com was founded in 1985 and has operations in the United States, Canada, the United Kingdom and Taiwan servicing a worldwide market.